

AALC's Supportive Living Week 2012

PRODUCT ORDER GUIDE



Balloons

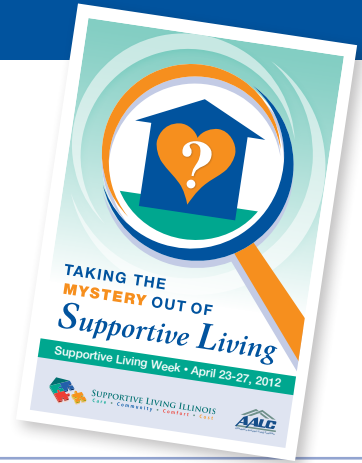
Decorate your facility with an assortment of Blue, Green and White balloons. Each pack contains an assortment of 50 - 9" balloons.

\$11/pack

Posters

Decorate the halls of your supportive living facility by displaying colorful posters featuring this year's logo "Taking the Mystery Out of Supportive Living." Each poster is 12x18 and is sold in packs of 4.

\$8/pack



Buttons

Sold in packs of 25, these buttons are a great way to showcase the spirit of Supportive Living among staff and residents.

\$10/pack



Notepads

These convenient sticky notepads can be used for a wide variety of purposes, from a grocery list to jotting down quick notes and reminders. 3" x 8", 25 sheets per pad. Notepads are sold individually.

\$2/each



Page Marker Magnifying Glass

Take the "Mystery Out of Supportive Living" by providing your residents and visitors with handy page marker magnifiers! Each magnifier features a die-cut slot to mark pages, 4X magnification, side ruler in inches and centimeters, and a protective cellophane sleeve.

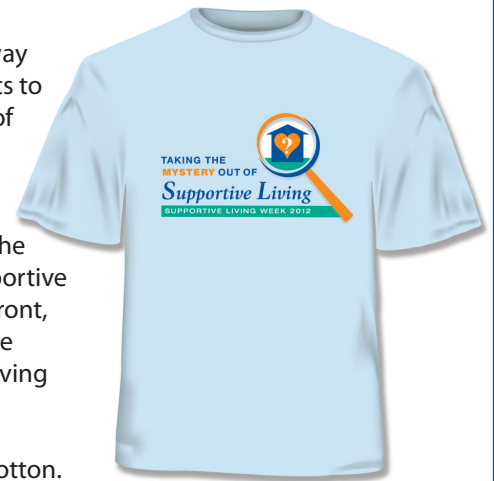
\$2.50/each

T-shirts

T-shirts are a great way for staff and residents to show their support of supportive living. These brightly designed shirts feature the "Taking the Mystery Out of Supportive Living" logo on the front, while showcasing the Illinois Supportive Living logo on the back. All t-shirts are 6.1 oz Gildan Ultra 100% Cotton.

M/L/XL = \$10/each

XXL/XXXL = \$15/each



Reusable Tote Bag

These reusable tote bags can be used for all types of things, from groceries to toting craft supplies. Each bag is 16 x 6 x 12 made from non-woven polypropylene. Totes are sold individually.

\$3.50/each



Purchase SLF Week 2012 Products Today!
Order your items online at: www.aalcorders.com

Ordering Information:

- Orders must be submitted by March 2, 2012.
- SLF Week products are non-refundable.
- All orders must include applicable shipping and handling charges.

- Items will ship by April 6, 2012. Payments for orders must be submitted online at time of purchase, or be submitted by check for entire amount, including shipping and handling to AALC.
- Only online orders will be accepted. Payment may be made online or with a check.

